



Installation instructions

Pitcher water filter

Model: AS-JF700

A replacement for the following water filter:

Zerowater® filter

ZR-017

Filter features:

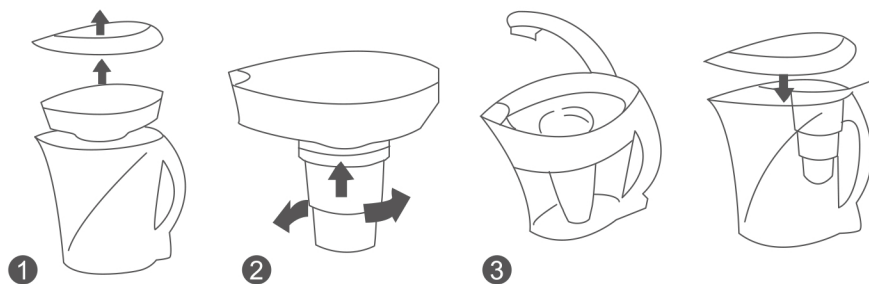
- Economical alternative to expensive substitutes.
- Easy installation and operation.
- Provides cleaner, fresher water by reducing impurities.
- Does not remove minerals which may be beneficial to health.

General installation guidelines:

- The filter connectors are larger to prevent leaks. You might have to twist the filter hard to make sure the connection is secure.

Installation instructions

1. Remove lid and water reservoir from top of dispenser/pitcher and remove filter from packaging.
2. Screw the filter tightly into the bottom of the reservoir to obtain a complete seal with the o-ring.
3. Fill reservoir with cold tap water and place lid on top. Allow all water to pass through the filter before filling again. Discard the first pitcher of filtered water.



⚠ Caution:

This filter should not be used with water that is microbiologically unsafe or of unknown quality without adequate disinfection before or after the system.

Storage and maintenance:

- Stored filters do not expire. Keep your unused filters in a cool, dark, and dry place until you need them.
- As the TDS concentrations vary in different regions, the service life of the filter might change accordingly. Please replace your filter in time.

Tap water tds	Contaminant level	Description	Expected quantity of per filter
000-001	Meets FDA definitions of purified bottled water	Unknown municipalities	N/A
002-050	Moderate	Naturally occurring in only a few cities. Can still have dangerous impurities such as lead.	40 gallons or more
051-200	Typical Range	Most water in the USA falls into this grouping.	25 to 40 gallons
201-300	High	Expect slightly lower capacity.	15 to 25 gallons
301-400	Exceptionally High	Most users will notice shorter filter life.	8 to 15 gallons
400+	Extreme	The highest TDS water. Expect lower capacity when reducing your water to 000.	8 gallons or less

When the TDS water meter reads 006, it's time to replace your filter.

Replace the filter once a month even though it has not reached its filtering capacity to prevent bacteria and fungus growth in your filter, supply lines, and storage tank.

⚠ Warning:

If the water is not passing through the filter, remove it and shake it up and down before putting it back to place.

Zerowater® is a registered trademark of Zero Technologies, LLC.

Zerowater® is used for reference purposes only.

*The service life mentioned above is subject to chlorine reduction.
Actual result varies according to the local water quality.

Power Components B.V.
Bergweg 165A
3707AC, Zeist
The Netherlands
Tel: +31 30 693 0262
Email: info@allspares.com