



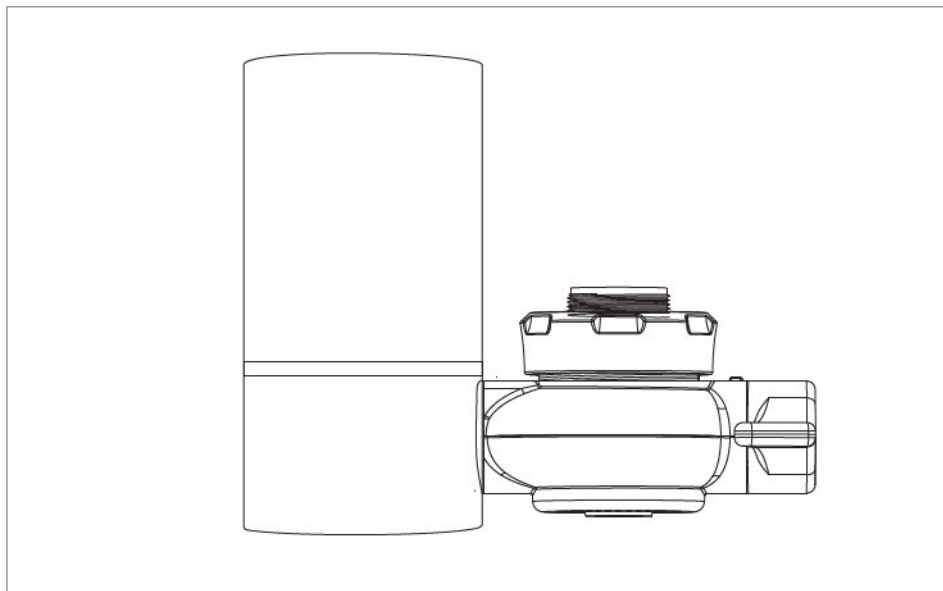
Tap Filter

User manual



Test the Doulton difference.

www.doulton.com



Features

- Stylish design
- Easy to install
- Comes with fittings to suit many styles of tap
- The ceramic filter can be cleaned to maintain flow

Filter parameters

Product	Ceramic	Carbon
Filter material	Ceramic and Granulated activated carbon	Activated carbon
Recommended Flow Rate	2L/min	2L/min
Water	Municipal	Municipal
Pressure	0.2 - 0.45MPa	0.2 - 0.45MPa
Temperature	5-45°C	5-45°C

Filter configuration

Carbon Filter

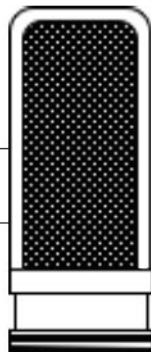
Activated Carbon



Ceramic filter

Microporous ceramic

Granulated Activated carbon



Component list

Component	Qty
Filter Housing	1
Filter	1
External threaded connector	2
Internal threaded connector	2
Sealing washers	2
Multi-connector	1
Wrench	1
Abrasive paper	1
Instructions	1

Authenticate and register your Doulton tap water filter

Authenticity and registration of your Doulton® filter can be completed online by visiting **www.doulton.com**

This gives you the reassurance that you have purchased a genuine Doulton® product that has been precision made in England to the highest standards.

Unique
Authenticity
Code

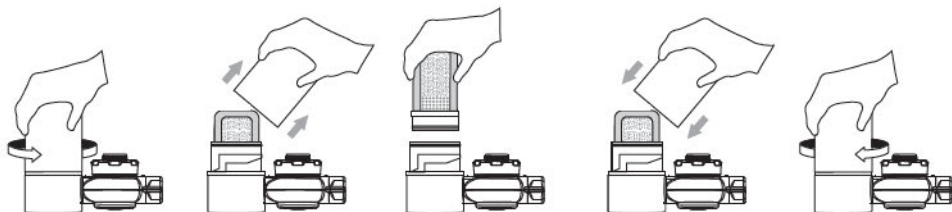


Product
Reference
Code

Additional notes

- Always store spare filters, sealed in their packaging in a cool dark place.
- Ensure hands are clean or wear rubber gloves when handling filters.
- If filter has been unused for 24hrs, allow the tap to run for 30 seconds before filling your glass to ensure that your drinking water is always fresh.
- Doulton Water Filters cannot accept liability if the user instructions are not followed.

Replacing a used filter



Turn anti-clockwise to unlock lid

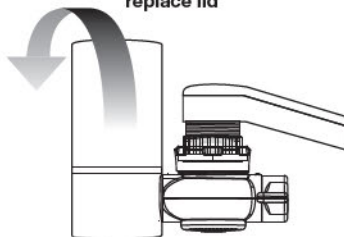
Remove lid

Remove old filter with a firm pull

Push in new filter and replace lid

Turn clockwise to lock lid

Note; You can remove filter housing from tap mount by tilting backwards.



Maintenance of ceramic tap filter

If water flow slows, it can be restored by cleaning the surface of the ceramic filter using the abrasive paper provided.

Remove filter from housing and scrub under clean running water.

Suggested Filter lifetime;

Your filter is expected to last 2-3 months. This is dependent upon incoming water volume and quality.



Product accessories



**Internal thread
connector
(22 and 24mm)**



**Multi
connector**



**External thread
connector
(22 and 24mm)**

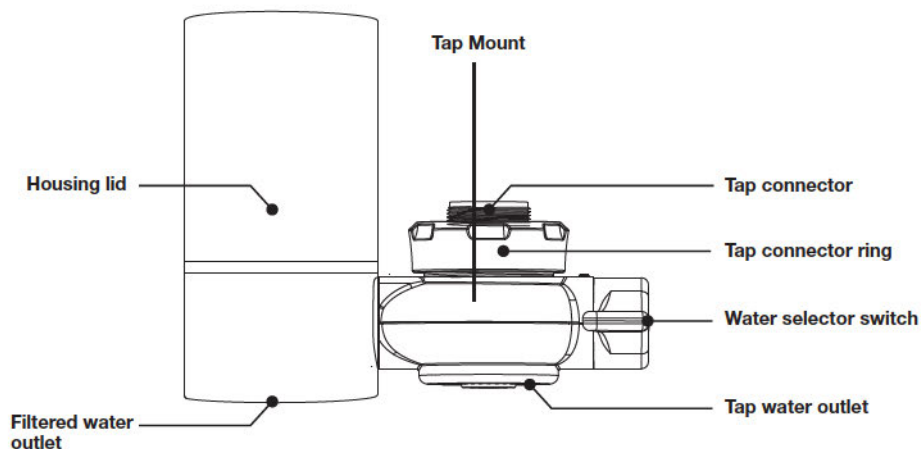


Wrench

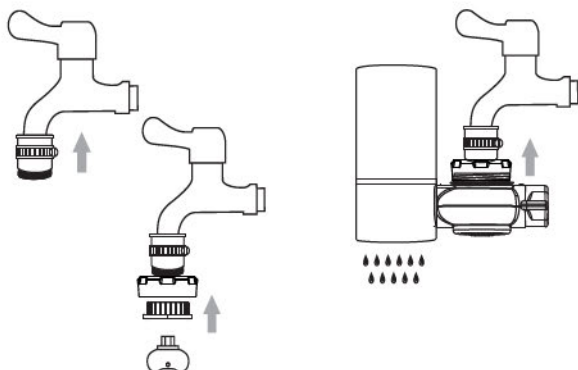


Sealing washer

Housing



External tap fitting



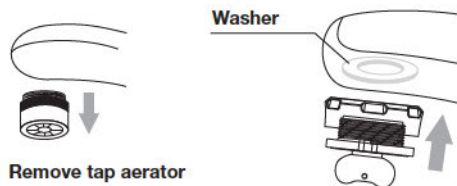
Push multi connector firmly onto the tap. Use slotted screwdriver to tighten. Put the tap connector ring over the 22mm internal connector, insert the appropriate washer and secure to multi-connector.

Secure the filter housing to the tap connector ring, ensuring the connector is centrally aligned.

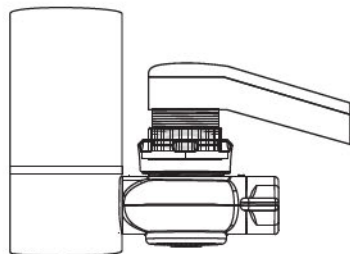
Run water in both switch positions to check for leaks. Tighten as necessary.

Run water through the filter until it runs clear. Leave to prime for 24 hours and run a further 2 litres to waste. Your filter is now ready to use.

Internal thread tap fitting



Remove tap aerator



Choose the suitable connector and washer.

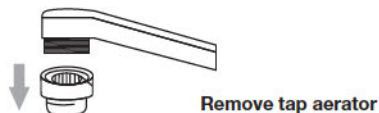
Put the tap connector ring over the connector and screw into tap using the wrench provided (as pictured left).

Secure the filter housing to the tap connector ring, ensuring the connector is centrally aligned (as pictured left).

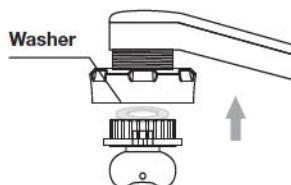
Run water in both switch positions to check for leaks. Tighten as necessary.

Run water through the filter until it runs clear. Leave to prime for 24 hours and run a further 2 litres to waste. Your filter is now ready to use.

External thread tap fitting



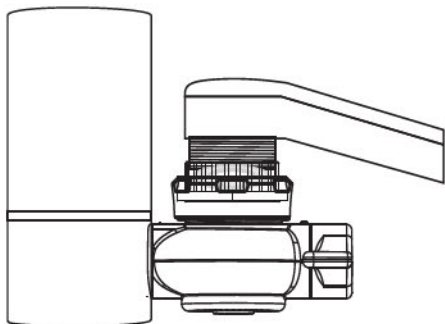
Choose the suitable connector and washer. Put the tap connector ring over the connector and screw into tap using the wrench provided (as pictured).



Secure the filter housing to the tap connector ring, ensuring the connector is centrally aligned (as pictured right).

Run water in both switch positions to check for leaks. Tighten as necessary.

Run water through the filter until it runs clear. Leave to prime for 24 hours and run a further 2 litres to waste. Your filter is now ready to use.



Congratulations

on purchasing your Doulton Tap Filter!



Doulton is the name that you can trust in water filtration.

Your tap filter is designed to remove unwanted chemicals from your drinking water whilst leaving the healthy, naturally occurring minerals. You are moments away from discovering the Doulton difference and experiencing great tasting filtered water.



Test the Doulton difference.

www.doulton.com